

Park & Ride - “The Cork Experience”

*Noel Tummon
Cork City Council*

Irish Parking Association
Seminar 2005

Cork City Council 

Park & Ride

- Why P&R ?
- Requirements for P&R.
- Cork Experience

Irish Parking Association
Seminar 2005

Cork City Council 

Why P & R ?

- Insufficient Car Parking Spaces in the City/Town Centre
- Access Roads are congested
- Give motorists a choice to change to Public Transport

Irish Parking Association
Seminar 2005

Cork City Council 

Why P & R ?

**P&R must be part of an overall transport strategy
In Cork - CASP Cork Area Strategy Plan
CASP which was commissioned by Cork City Council and Cork County Council and supported by DoT has an integrated transportation strategy.**

Irish Parking Association
Seminar 2005

Cork City Council 

CASP

- Development of the Road Network
- Traffic & Parking Management
- High quality bus services on dedicated bus corridors (Green Routes)
- Commuter Rail Services
- Development of Park & Ride sites

Irish Parking Association
Seminar 2005

Cork City Council 

Park & Ride Strategy

- Bus Based Sites:
 - Kinsale Road Roundabout (Black Ash)
 - Bandon Road Roundabout
 - Carrigaline (long term)
- Rail Based Sites:
 - Blarney
 - Carrigaloe
 - Little Island
 - Midleton

Irish Parking Association
Seminar 2005

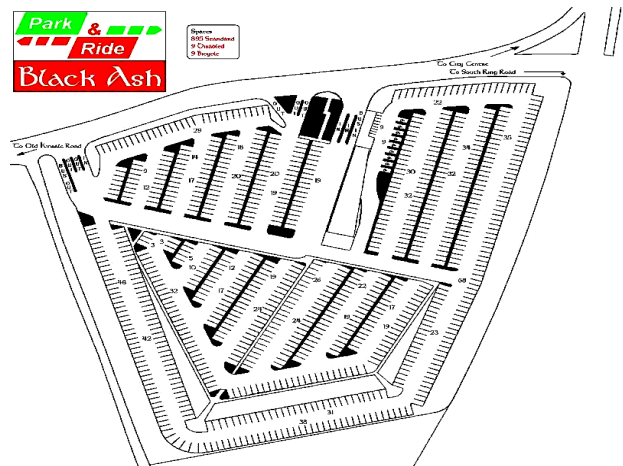
Cork City Council 

Requirements for P&R

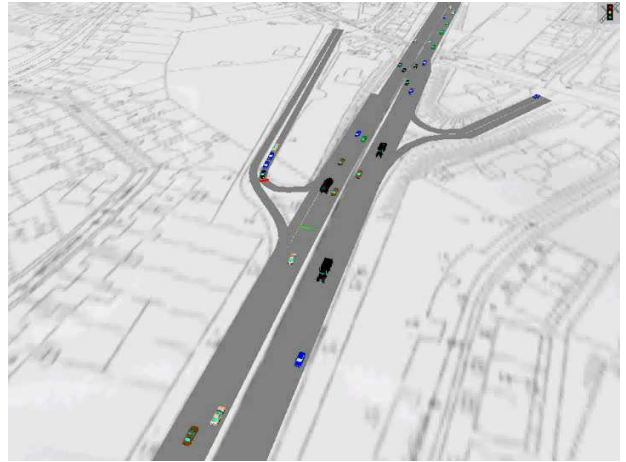
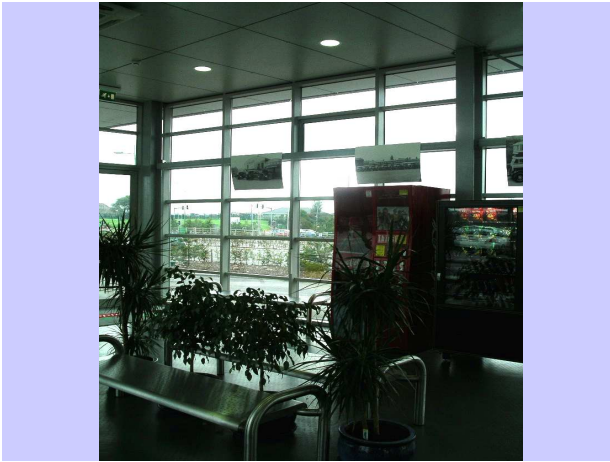
- ✓ Location
- ✓ Convenient, easy access and good signposting
- ✓ Adequate lighting, short walking distances, comfortable shelters/waiting area, good set-down/pick-up facilities for bus
- ✓ Secure, use of cameras, safe environment
- ✓ Real time information
- ✓ Pricing

Irish Parking Association
Seminar 2005

Cork City Council







Cork Park & Ride

Questions ?